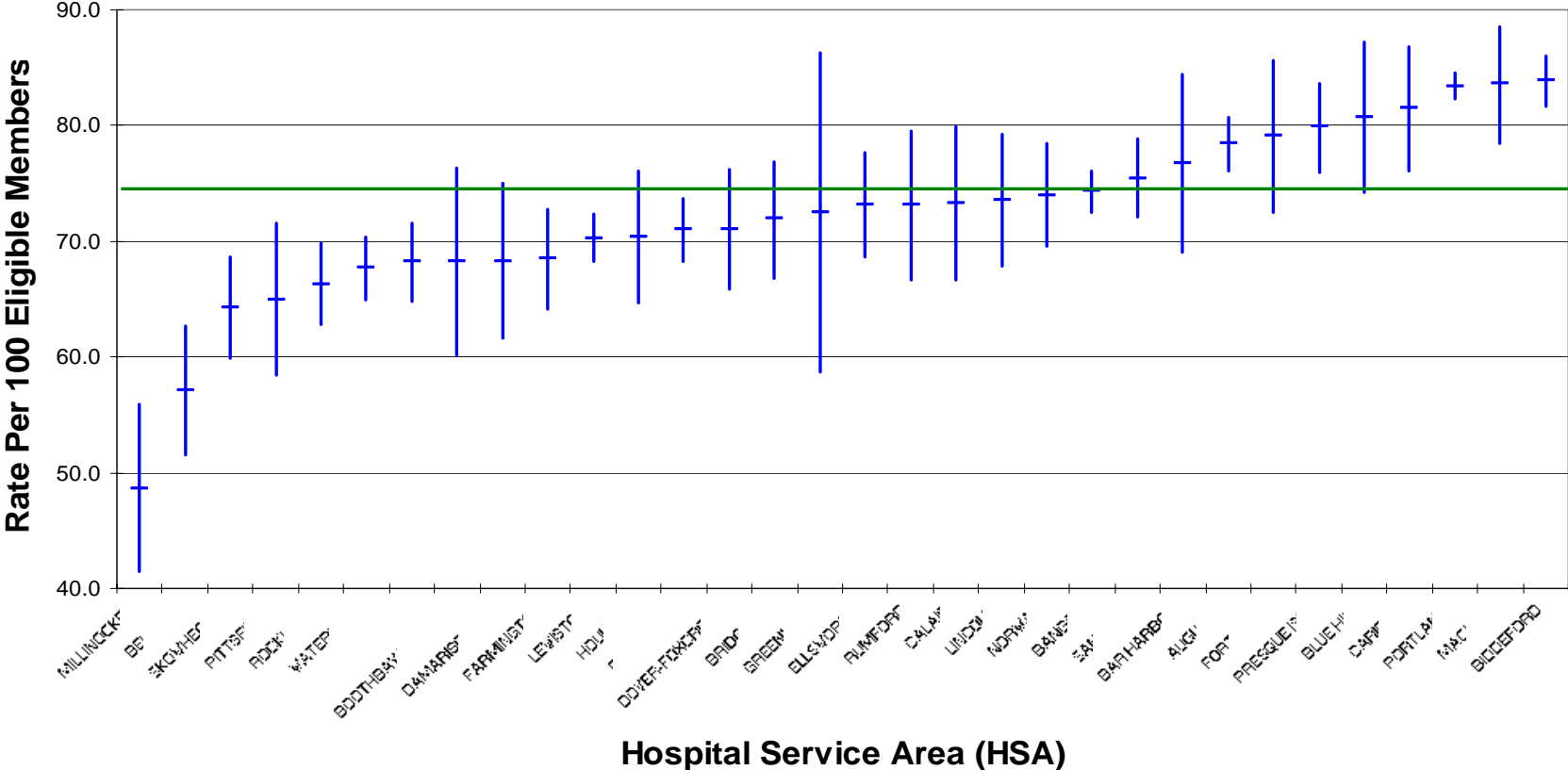


Regional Variation in Effective Care

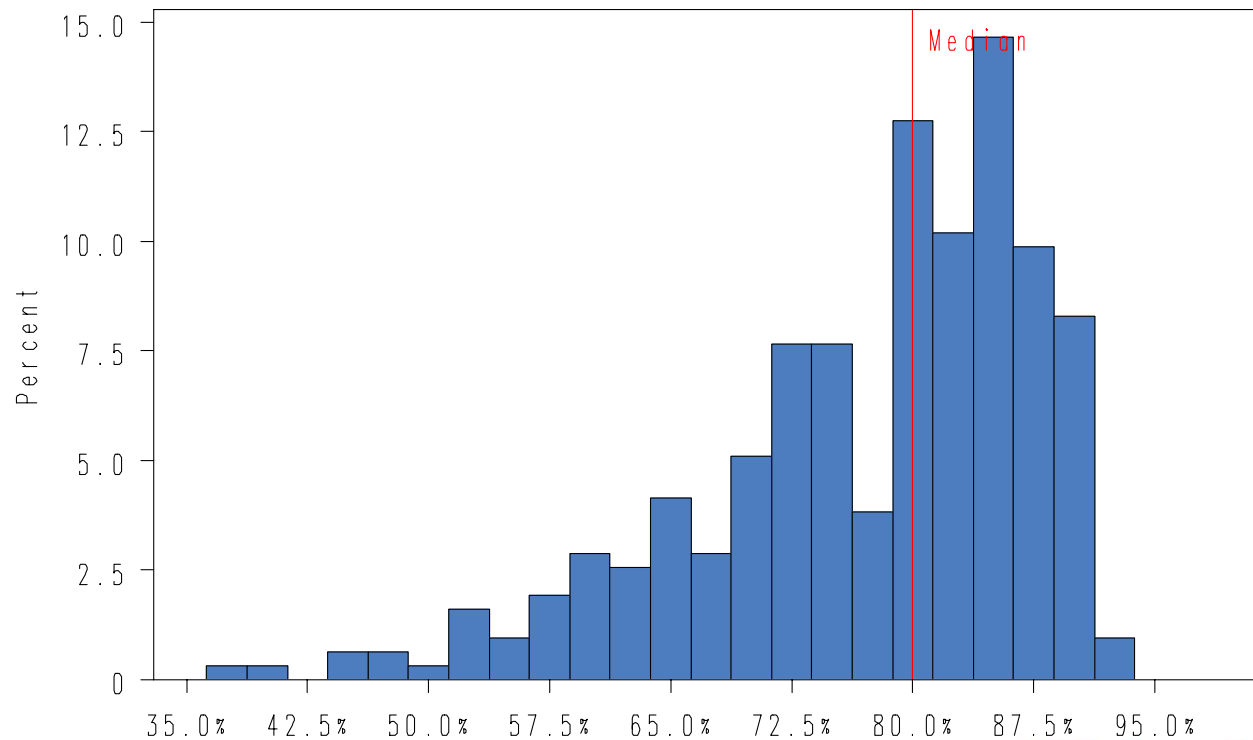
Percent of Diabetic Members Aged 18-64
 Having LDL-C Test Performed
 Measurement Period: 7/1/2004-6/30/2005



PCP – HEDIS Diabetic HbA1c Testing

- Percent of providers within performance group

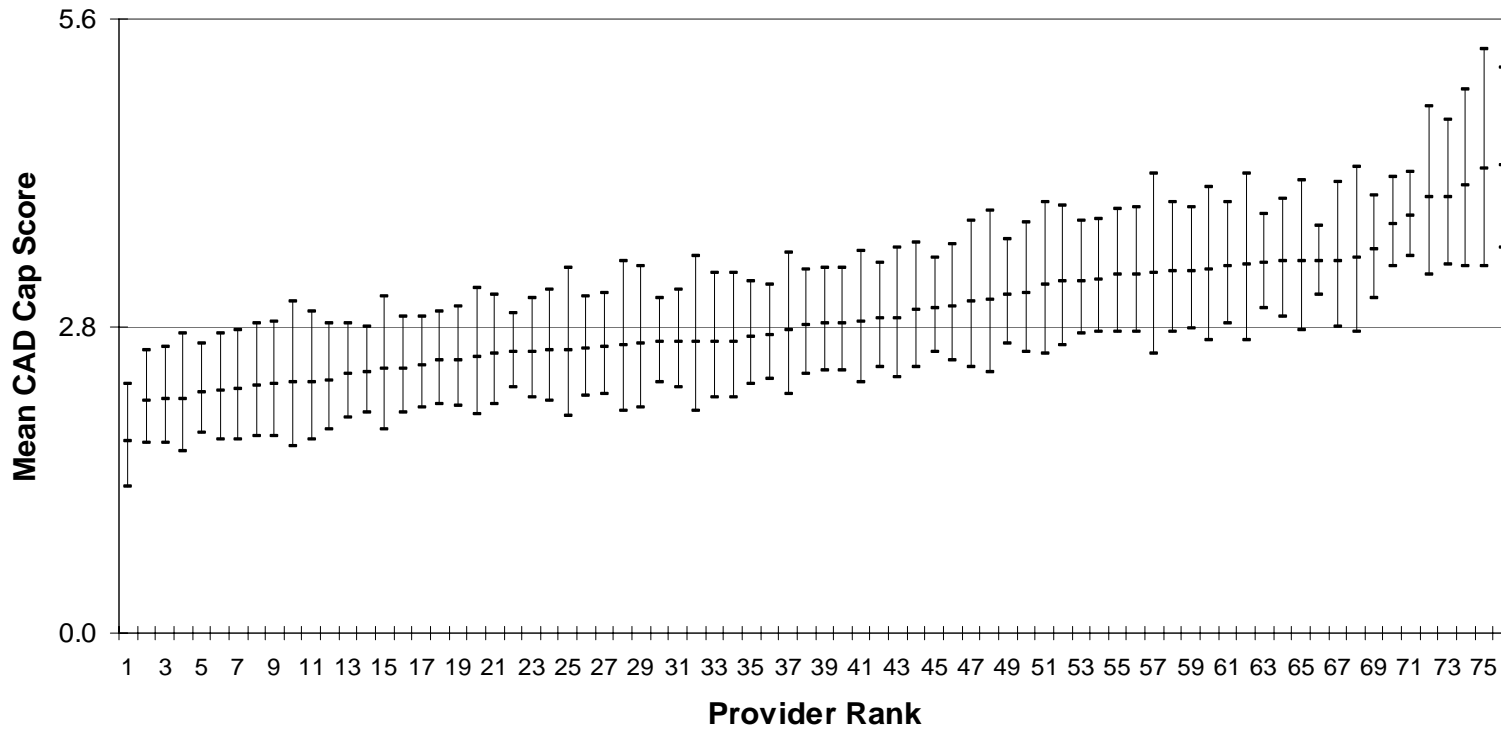
HEDIS Diabetes HbA1c



Provider-Level Variation

Cardiology – Effective Care (CAD Gap Score)

Coronary Artery Disease Gap in Care Score
Provider Performance and Confidence Intervals (July 2004 - June 2005)



Cardiology Results

- There is no correlation between delivery of effective care and efficiency performance (supply sensitive cost)
- Comparison of provider performance is revealing

Cardiology - Total Effective Care Score vs. Cardiac Testing Cost

